

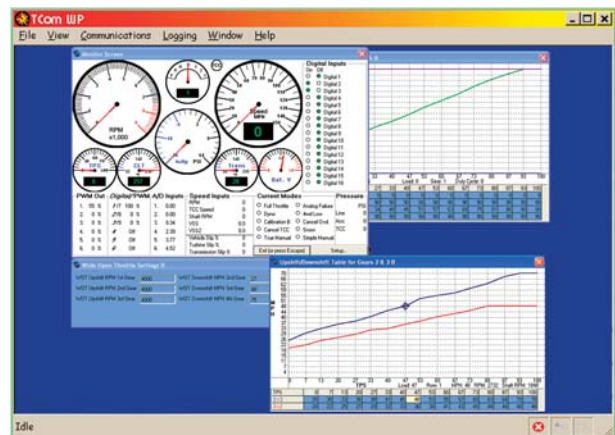


Transmission Control Unit

Today's electronically-controlled overdrive transmissions can offer excellent fuel economy and performance, but factory transmission controllers often fall short of the mark when it comes to street/strip or retro-fit use. The revolutionary new TCI® Transmission Control Unit overcomes the shortcomings of performance-compromised OEM electronic transmission controllers and elevates electronically controlled automatic transmissions to a new standard of performance and tunability.

Engineered to work with nearly any electronically controlled automatic transmission, the TCI® Transmission Control Unit is fully-programmable and can be run either as a standalone unit – even with a non-computer controlled engine - or in conjunction with either OEM or aftermarket ECUs, such as the FAST™ XFI™ Fuel Injection System. The TCI® Transmission Control Unit will work with most GM, Ford, and Chrysler electronically-controlled automatic transmissions* and includes a wide array of tuning options, including load, gear, rpm and speed-based programming – all of which can be adjusted via a simple serial port interface with any Windows based pc or laptop. Its ability to communicate with the FAST™ XFI™ Fuel Injection System and other compatible CAN 2.0b devices means that the TCI® Transmission Control Unit uses a simpler, easier to install wiring harness than most other aftermarket transmission controllers. The TCI® Transmission Control Unit includes easy to use T-Com™ software, which allows simple plug and play transmission operation via several built-in programs, as well as custom tuning and programming, data logging and fault diagnosis.

- Fully programmable through easy-to-use T-Com™ software
- Real-time switchable dual calibrations
- Communicates with RS-232 and J1939 protocol ECUs and compatible CAN 2.0b devices
- Electronic control over shift points, shift firmness, torque converter clutch (TCC) lockup in all gears & shift speed
- Multiple shift modes and button shift capability
- Powerful data logging and self diagnostics
- Durable, weather-resistant housing



*Compatible Transmissions

GENERAL MOTORS	FORD	DAIMLER-CHRYSLER
4L60E, 65E, 70E	E4OD**	45RFE
4L80E, 85E	4R70W	545RFE
4T60E	AODE	
4T65E	4R100	
4T80E		
5L50		

**external speed sensor required

377500	Transmission Control Unit
377502	Wiring Harness For GM/Chevrolet 4L60E, 4L65E, 4L70E, 4L80E, 4L85E
377506	Wiring Harness For Ford '92-'97 AODE/4R70W
377507	Wiring Harness For Ford '98 & Up AODE/4R70W



Additional wiring harnesses for popular GM, Ford & Chrysler applications coming soon